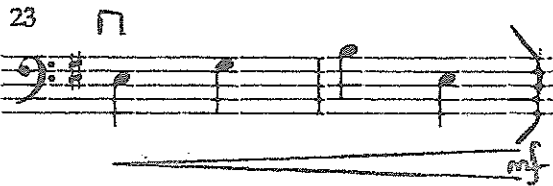
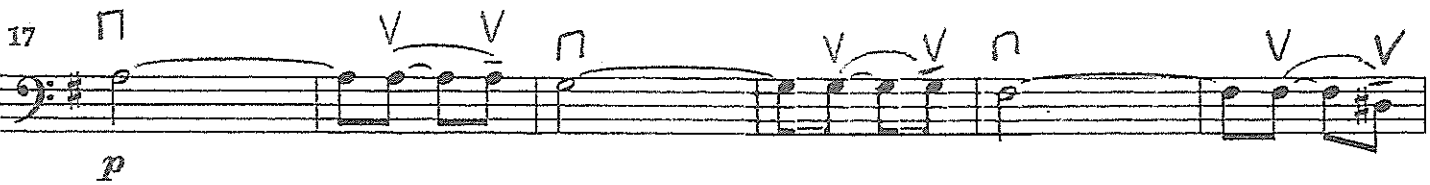
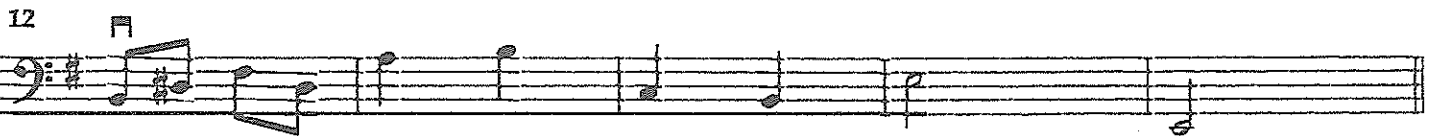
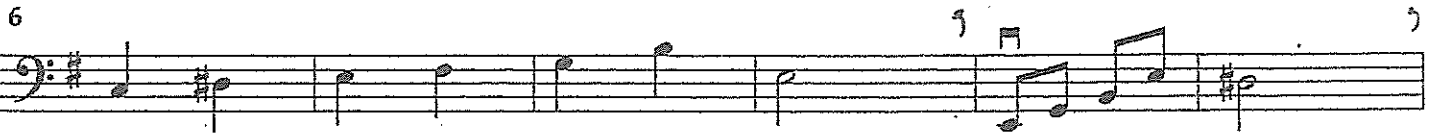




# BASS EXCERPT #1

Barocca - Shirl Jae Atwell (mm. 2-24)

Andante (♩ = 88-92)





## BASS EXCERPT #2

*Sinfonia no. 9 in C Major - Felix Mendelssohn/arr. Moss (m. 67-90)*

$\text{♩} = 70-74$  ( $\text{♩} = 140-148$ )  
FINGERINGS ARE OPTIONAL.

67

71 72 73 74 75

76 77 78 79 80

81

82 83 84 85 86 87

89





## BASS EXCERPT #4

Wagner — Die Meistersinger

$\text{♩} = 100$

2

CONTRABASSO.

*legato ma ben tenuto*

*più f*



*Pesante molto*

*sempre ff*





## BASS EXCERPT #5

*Symphony no. 2, last mvmt. - P. Tchaikovsky/arr. Muller (mm. 118-143)*

$\text{♩} = 138-152$

Play top notes

Handwritten musical score for bass, consisting of four staves. The score includes various musical notations such as dynamics (*mf*, *f*, *ff*), articulation (accents, slurs), and performance instructions (2, 3, V, n). Measure numbers 120, 128, and 136 are circled. The final staff ends with a large scribbled-out section.



## BASS EXCERPT #6

Beethoven - Symphony No. 5

$\text{♩} = 70$

The image shows a handwritten musical score for a bass excerpt. It consists of five staves of music. The first staff is marked with 'cresc.' and 'ff'. The second staff has a large 'X' over the end. The third and fourth staves have '2.' and '1.' markings. The fifth staff has a large bracket and '1-6' markings. Fingerings and bowings are indicated throughout.

CURRENT <sup>R</sup> PLAYING LEVEL  
MOST ACCURATELY



# BASS EXCERPT #7

Brahms - Symphony No. 1  
♩. = 108

4

## DOUBLE BASS



## BASS EXCERPT #8

La Forza Del Destino Overture – Giuseppe Verdi (H to J)

Allegro brillante

$\text{♩} = 138 - 144$

4  
4  
START  
↓

Handwritten musical score for Bass, consisting of six staves. The score includes various performance instructions and markings:

- Staff 1: *mf staccato*, *arco*, *H*, *V*
- Staff 2: *mf*, *V*
- Staff 3: *mf*, *V*
- Staff 4: *ff*, *V*
- Staff 5: *n*, *v*
- Staff 6: *v*, *sfz*, *sfz*, *sfz*, *J*

The music is written in bass clef with a key signature of two sharps (F# and C#). It features a variety of rhythmic patterns, including eighth and sixteenth notes, and rests. The dynamics range from *mf* (mezzo-forte) to *ff* (fortissimo). The tempo is marked as *Allegro brillante* with a metronome marking of 138-144 beats per minute.



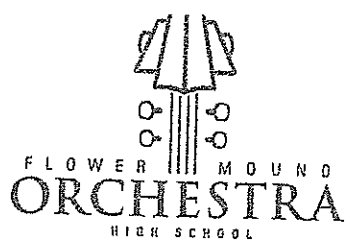
### Symphonic/Camerata Bass Scales

E major ♩ = 60

Begin at frog      Upper half      Lower half      Upper half      Lower half

F major ♩ = 80

G major ♩ = 60  
W.B.



## Chamber/Philharmonic Bass Scales

F major ♩ = 80

simile

G major ♩ = 60

A major ♩ = 80

Off the string